

OmniPro[®] Vision AI

COLLISION AVOIDANCE SYSTEM



When a one-second error can mean the difference between a near miss and a serious injury or fatality, you need the most advanced collision avoidance system working for your team. OmniPro[®] Vision AI's award-winning technology helps reduce mining operation incidents with powerful features.

Accurate, high-speed detection of people and equipment

- Each camera can generate up to five fully customizable alert zones
- Identifies and alerts on specified hazards, such as pedestrians, equipment and key objects – no tags required
- Identifies people in multiple positions and wearing PPE
- Reporting System with time-stamped photos
- Minimal nuisance alerts

OmniPro “sees” people in the operator’s blind spots

Triggers audible & visual alerts
No tags required

Customized alert zones for the unique requirements of your operation

Which Safety Challenges Apply to Your Operation?

These are the most common reasons we get inquiries about OmniPro Vision AI

- ☐ Equipment Operator Blind Spots
- ☐ Pinched or Narrow Travel Corridors
- ☐ Restricted View Corners
- ☐ High Traffic Zones
- ☐ Complacent Operators
- ☐ Vendors or Guest Vehicles on Job Site
- ☐ New & Inexperienced Workers
- ☐ Fatigued Workers, Especially End-of-Shift Workers Who Need an Extra Set of Eyes
- ☐ Experienced a Pedestrian-Involved Incident
- ☐ Experienced a Serious Injury or Fatality

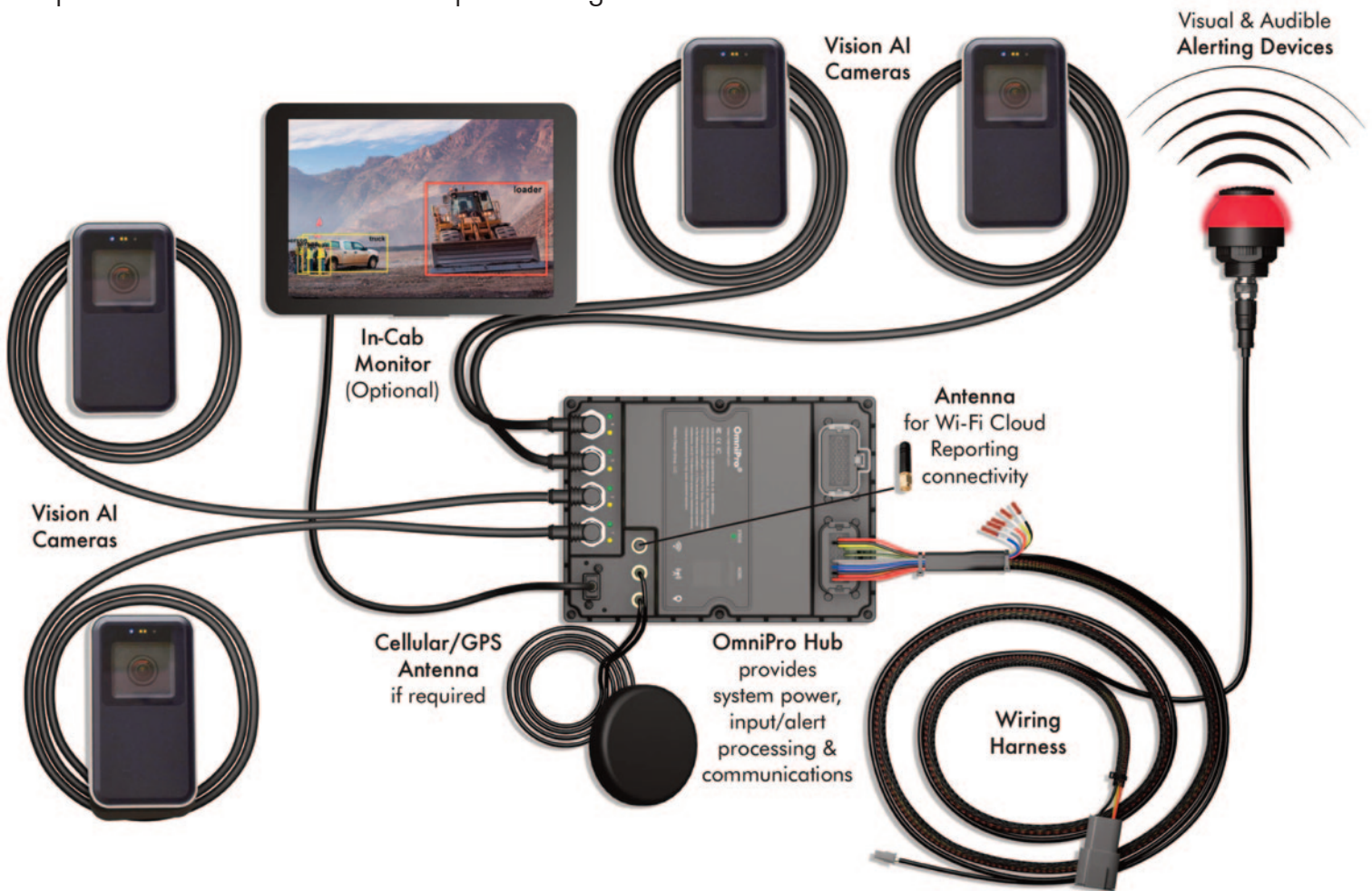


OmniPro[®] Vision AI

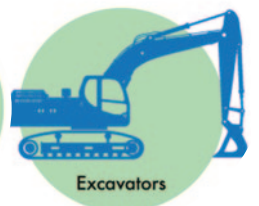
COLLISION AVOIDANCE SYSTEM

OmniPro Vision AI Hardware Package for All Mobile Equipment

Up to 4 cameras for 360° blind-spot coverage



**OmniPro Is Easy to
Install and Operate
on Any Size or
Type of Mobile
Equipment**



sales@matrixteam.com • 812-490-1525



OmniPro[®] Vision AI

COLLISION AVOIDANCE SYSTEM

Features & Benefits



Vision AI Camera

- Compact and water/weather resistant – IP67-rated
- Alert zones that can apply to different objects and perform various actions
- Time of Flight (ToF) sensor reports if a camera is blocked or obstructed
- Ambient light sensor detects if the vehicle is in low-light conditions or if it transitions from light to darkness
- Infrared (IR) Cut Filter for low-light support
- Gorilla® Glass lens cover



OmniPro Hub

- Designed to minimize false positives and nuisance alerts
- Can identify pedestrians in any posture, including standing sideways, crouching, kneeling and partial view, as well as people wearing PPE
- Cameras auto-switch to monitor the direction of travel
- Simple plug-and-play set-up and troubleshooting
- Built-in web UI interface eliminates the need for software on local laptops/PCs and provides a single configuration point of all connected devices
- Easily integrates with most OEMs
- Low maintenance with wireless future upgrades
- Advanced system architecture accommodates future sensors and devices
- Operates up to four cameras
- Visual and audible alerts
- Mobile or fixed cameras: intersection control, safety doors, pedestrian access
- Rugged design – IP67-rated
- Multiple I/O connections – five digital inputs and five relay outputs
- Wide operating voltage of 12-48 VDC



Reporting System

OmniPro Vision AI's desktop reporting provides authorized users with 24/7 access to software tools and a dashboard with real-time metrics and analytics.

- Records and stores zone breach incidents with photo and time-stamp
- Pre-event and post-event image capture capabilities
- Provides real-time, full-data capture with analysis: average daily breaches per machine; trending breaches over time; event graphs
- Facial blurring (optional)
- Data can be accessed on the system locally for up to 30 days. Additionally, data accessed over Wi-Fi or remote through the cellular cloud 24/7/365 can be reviewed for an extended period of time.

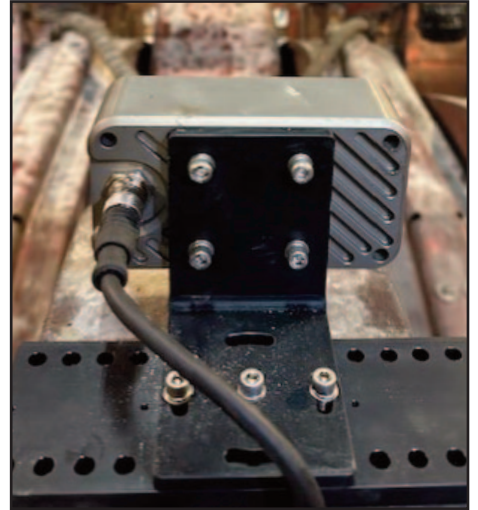


sales@matrixteam.com • 812-490-1525



OmniPro[®] Vision AI

COLLISION AVOIDANCE SYSTEM



**Matrix can work
with you to create
a system that's
tailored to your
operation's
unique safety
requirements**



Help make your operation safer!

Learn more or schedule a demonstration

sales@matrixteam.com • 812-490-1525

