

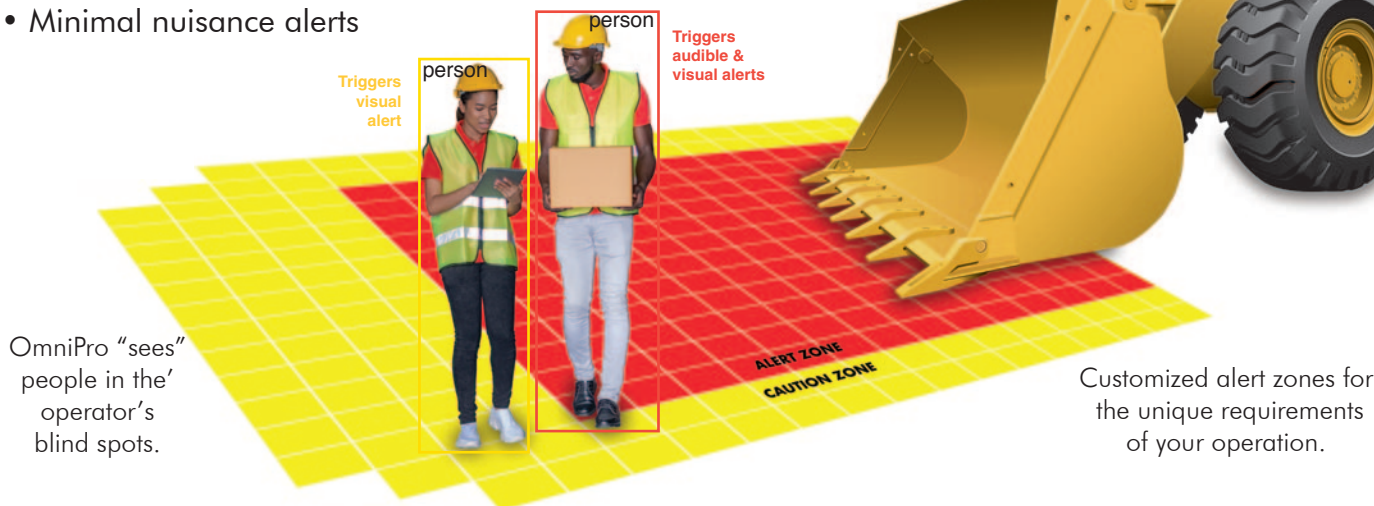
# OmniPro<sup>®</sup> Vision AI

## COLLISION AVOIDANCE SYSTEM

When a one-second error can mean the difference between a near miss and a SIF (serious injury or fatality), you need the most advanced collision avoidance system working for your team. OmniPro<sup>®</sup> Vision AI's award-winning technology helps reduce mining operation incidents with powerful features.

### Accurate, high-speed detection of people and equipment

- Each camera can generate up to five fully customizable alert zones
- Identifies and alerts on specified hazards, such as pedestrians, equipment and key object) – no tags required
- Identifies people in multiple positions and wearing PPE
- Cloud Reporting with photos
- Minimal nuisance alerts



### Which Safety Challenges Apply to Your Operation?

These are the most common reasons we get inquiries about OmniPro Vision AI

- ☐ Large Equipment Operator Blind Spots
- ☐ Pinched or Narrow Travel Corridors
- ☐ Restricted View Corners
- ☐ High Traffic Zones
- ☐ Complacent Operators
- ☐ Vendors or Guest Vehicles on Job Site
- ☐ New & Inexperienced Workers
- ☐ Fatigued Workers, Especially Near End of Shift
- ☐ Experienced a Pedestrian-Involved Incident
- ☐ Experienced a Serious Injury or Fatality



# OmniPro<sup>®</sup> Vision AI

COLLISION AVOIDANCE SYSTEM

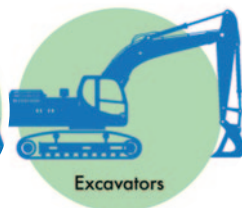


## OmniPro Vision AI Hardware Package

Standard package for forward and reverse direction monitoring.



**OmniPro Is Easy to  
Install and Operate  
on Any Size or  
Type of Mobile  
Equipment**





# OmniPro<sup>®</sup> Vision AI

## COLLISION AVOIDANCE SYSTEM



### Features & Benefits



#### Vision AI Camera

- Compact and water/weather resistant – IP67-rated
- Alert zones that can apply to different objects and perform various actions
- Time of Flight (ToF) sensor reports if a camera is blocked or obstructed
- Ambient light sensor detects if the vehicle is in low-light conditions or if it transitions from light to darkness
- Infrared (IR) Cut Filter for low-light support
- Gorilla® Glass lens cover



#### OmniPro Hub

- Designed to minimize false positives and nuisance alerts
- Can identify pedestrians in any posture, including standing sideways, crouching, kneeling and partial view, as well as people wearing PPE
- Cameras auto-switch to monitor the direction of travel
- Simple plug-and-play set-up and troubleshooting
- Built-in web UI interface eliminates the need for software on local laptops/PCs and provides a single configuration point of all connected devices
- Easily integrates with most OEMs
- Low maintenance with wireless future upgrades
- Advanced system architecture accommodates future sensors and devices
- Operates up to four cameras
- Visual and audible alerts
- Mobile or fixed cameras: intersection control, safety doors, pedestrian access
- Rugged design – IP67-rated
- Multiple I/O connections – five digital inputs and five relay outputs
- Wide operating voltage of 12-48 VDC



#### Reporting System

OmniPro Vision AI's desktop reporting provides authorized users with 24/7 access to software tools and a dashboard with real-time metrics and analytics.

- Records and stores zone breach incidents with photo and time-stamp
- Pre-event and post-event image capture capabilities
- Provides real-time, full-data capture with analysis: average daily breaches per machine; trending breaches over time; event graphs
- Facial blurring (optional)
- Data can be accessed on the system locally for up to 30 days. Additionally, data accessed over Wi-Fi or remote through the cellular cloud 24/7/365 can be reviewed for an extended period of time.

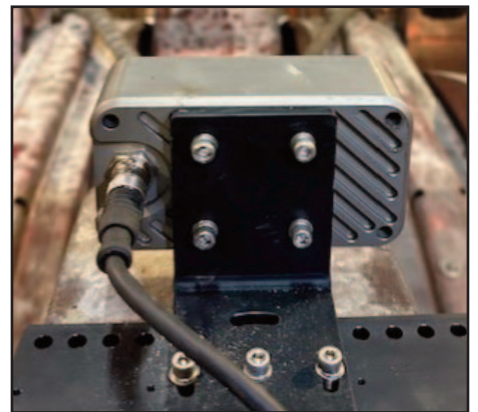


# OmniPro<sup>®</sup> Vision AI

COLLISION AVOIDANCE SYSTEM



**Matrix can work  
with you to create  
a system that's  
tailored to your  
operation's  
unique safety  
requirements**





# OmniPro<sup>®</sup> Vision AI

COLLISION AVOIDANCE SYSTEM



## Matrix Design Group LLC

### Company

Headquartered in Newburgh, Indiana, Matrix is a wholly owned subsidiary of Alliance Resource Partners, L.P. Since 2006, our core business has been industrial safety and providing operations-friendly applications that meet evolving industry regulations.

### Experience

Matrix has been producing proximity detection/collision avoidance technology since 2006. Safety technology is our core competence.

### Team

Matrix's 60+ engineers continuously innovate, iterate and improve our products to provide a best-in-class solution to our customers.

### Support

Matrix is an industry leader in service and support. We have a large North American service group as well as certified third-party technicians to support OmniPro Vision AI.

### Online Resources

Visit the  
Matrix  
Website

Visit the  
OmniPro  
Vision AI  
Page

Visit the  
OmniPro  
FAQ  
Page



## Help make your operation safer!

Learn more or schedule a demonstration

[sales@matrixteam.com](mailto:sales@matrixteam.com)  
812-490-1525

