



XP Enclosures



- **MSHA Approved**
- **Replaces Any Standard Enclosure**
- **In Stock. Ready to Ship!**

Matrix manufactures high-quality, robust XP enclosures for coal or gassy mine operations.

These enclosures, designed to replace any existing round or square enclosure, are MSHA approved and in stock.

www.matrixteam.com 

Phone: 812.490.1525 • Fax: 812.490.1582 • 3299 Tower Drive • Newburgh, Indiana 47630 • email: sales@matrixteam.com



XP Enclosures

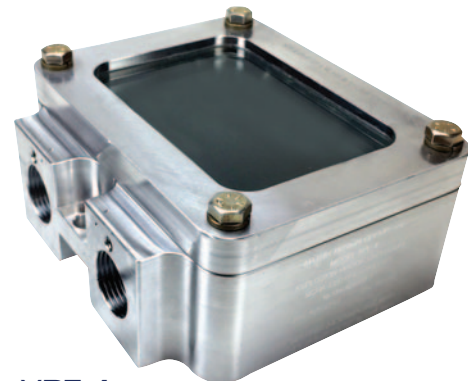
CONTACT YOUR MATRIX REP FOR MORE INFORMATION



MODEL XPE-4

XP SQUARE ENCLOSURE WITH LID

MSHA Certified

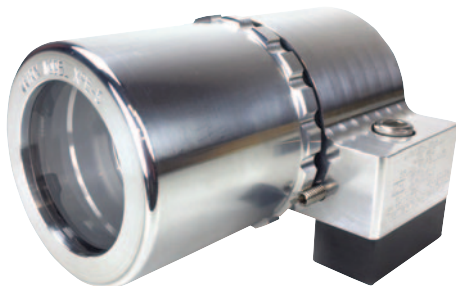


MODEL XPE-4

XP SQUARE ENCLOSURE WITH LENS

Matrix Part No.10004268

MSHA Certified



MODEL XPE-5

XP ROUND ENCLOSURE

For lights and cameras. Replaces any standard round enclosure.

Matrix Part No.10004009

MSHA Certified



MODEL XPE-3

PLM ENCLOSURE

14.5" x 8" x 7"

Matrix Part No.10006054

MSHA Certified

FOLLOW US!



www.matrixteam.com 

Phone: 812.490.1525 • Fax: 812.490.1582 • 3299 Tower Drive • Newburgh, Indiana 47630 • email: sales@matrixteam.com