



# IntelliZone® Accessories



## MULTI-LOCATOR CHARGING STATION

Simultaneously charges up to six IntelliZone locators.

Matrix Part # 10001710



## LEATHER LOCATOR POUCH

Tough, protective leather pouch provides a secure way to wear and protect your IntelliZone locator.

Matrix Part # 10001056



## FLEXIBLE LOCATOR PROTECTIVE CASE

A lower cost way to help extend the life of your locator. Soft, flexible material cushions the blow should your locator be dropped on a hard surface.

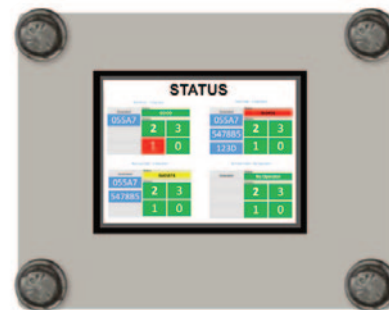
Matrix Part # 10004155



## IN-CAB DIRECTIONAL DISPLAY

Provides mobile equipment operator with an in-cab visual alert when an IntelliZone locator enters a safety alert zone. Indicates RED ZONE or YELLOW ZONE activity.

Matrix Part # 10002867



## STATUS SCREEN

Provides a quick visual status report on your IntelliZone system drivers and locators.

- Easy to diagnose system without Faceboss
- No underground laptop required
- Decreases time to trouble shoot system
- Six screens for status and diagnostic

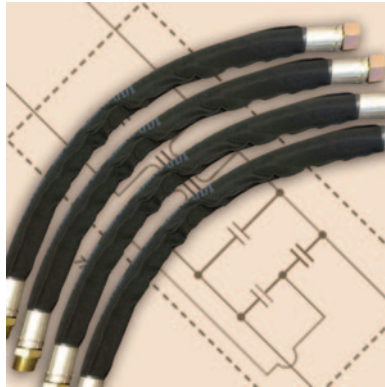
[www.matrixteam.com](http://www.matrixteam.com) 



# IntelliZone® Accessories

## WATER LINE FILTER

Specially shielded 36" non-conductive water line that helps reduce system interference. Custom lengths available upon request.



### Standard Lengths

- 1.25" x 36" L (JIC M to JIC F) Part #10004580
- 1.25" x 36" L (NPS M to NPS F) Part #10004583
- 1.50" x 36" L (JIC M to JIC F) Part #10004588
- 1.50" x 36" L (NPS M to NPS F) Part #10004589



## POWER LINE FILTER

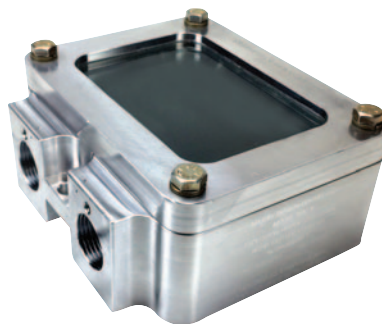
Specially shielded non-conductive power line EMI filter that helps reduce system interference/nuisance trips.

Part #10004505

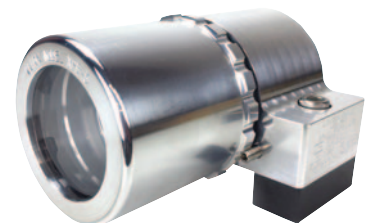
## XP Enclosures



MODEL XPE-4  
**XP SQUARE ENCLOSURE  
WITH LID**  
MSHA Certified



MODEL XPE-4  
**XP SQUARE ENCLOSURE  
WITH LENS**  
MSHA Certified



MODEL XPE-5  
**XP ROUND ENCLOSURE**  
For lights and cameras.  
Replaces any standard  
round enclosure.  
MSHA Certified

[www.matrixteam.com](http://www.matrixteam.com) 

Phone: 812.490.1525 • Fax: 812.490.1582 • 3299 Tower Drive • Newburgh, Indiana 47630 • email: sales@matrixteam.com