



# OmniPro<sup>®</sup>

## Collision Avoidance System

for Mining & Industrial  
Mobile Equipment



- OmniPro<sup>®</sup> is a camera safety system that uses Visual Artificial Intelligence (V.A.I.) to detect people and objects, such as stop signs, within a mobile equipment unit's projected travel path and alerts the operator of their presence.
- Operates as an independent warning system or can be machine integrated.
- Records and stores zone breach incidents with photo and time-stamp.
- Operates as a single-, dual- or three-camera system for a wider coverage area. Each camera has a 120° field-of-view.
- Workers do not wear a location device.
- Plug-and-play design for easy installation, set-up and operation.
- Programmable alert zones match your operating environment.
- Rugged design for longer life in high-vibration industrial environments.
- In two-camera systems, OmniPro will auto-switch to only monitor the vehicle's direction of travel (reduces nuisance warnings).

[www.matrixteam.com](http://www.matrixteam.com) 

Phone: + 1812.490.1525 • Fax: + 1 812.490.1582 • 3299 Tower Drive • Newburgh, Indiana 47630 • email: sales@matrixteam.com



# OmniPro®

## Collision Avoidance System

for Mining & Industrial  
Mobile Equipment

### OmniPro® Features

- Utilizes audio and/or visual operator alerting
- 3 output relays 5A, switching voltage 277VAC, 30VDC Max
- 2 Optoisolated sourcing inputs 5-30VDC
- 802.11 2.4 and 5.0 Ghz dual band Wireless Lan
- 2.4-802.15.24 Zigbee for single or mesh send and receive
- Bluetooth 4.2/BLE
- 3-axis accelerometer
- Ethernet port 10/100/1000 (gigabit)
- HDMI port
- 1 USB 3.0 port
- 10-pin quick connect port for power and IO
- External power LED indication
- Tempered glass lens cover
- Mounting bracket can rotate 180°
- For indoor or outdoor usage

### Detection Menu

- Person
- Truck
- Car
- Forklift
- Stop Sign
- Pedestrian Sign

Equipment operator can select the detection and option(s) that best match their operating environment.

### OmniPro® Specifications

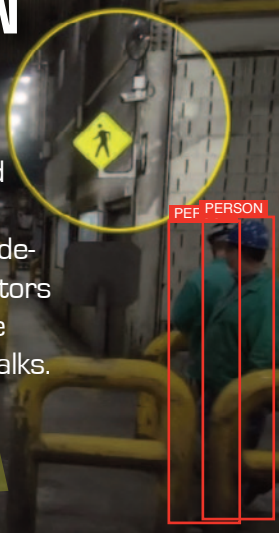
Voltage (input)	9-36VDC
Current (typical)	500mA
Current (peak)	2.5A
Dimensions (H x W x D) - In (H x W x D) - mm	11.0 x 4.75 x 4.25 279.4 x 120.7 x 107.9
Mounting	Mounting bracket provided. Accepts standard RAM mount base hole pattern.
Weight (approx.)	6.00lbs [2.72kg]



### INTERSECTION CONTROL

Mounted OmniPro cameras can be used to activate warning signs or other safety devices that alert operators when pedestrians are nearing aisle cross-walks.

OmniPro-monitored  
high-volume walkways



The OmniPro IO Module provides power and communications for up to three cameras for maximum field-of-view



FCC ID: MCQ-S2CTH, FCC ID: 2ABCB-RP148, FCC ID: 2ADUTLGP006  
CONTAINS: IC: 1846A-S2CTH, IC: 20953-RP148

This device complies with part 15 of the FCC Rules. Operation is subject to the following two conditions:  
(1) This device may not cause harmful interference, and (2) This device must accept any interference received, including interference that may cause undesired operation. This Class A/B digital apparatus complies with Canadian ICES-003

OmniPro® is a registered trademark of Matrix Design Group, LLC

[www.matrixteam.com](http://www.matrixteam.com)

Phone: 812.490.1525 • Fax: 812.490.1582 • 3299 Tower Drive • Newburgh, Indiana 47630 • email: [sales@matrixteam.com](mailto:sales@matrixteam.com)