

MATRIX DESIGN GROUP

PRIORITIZING OPERATOR SAFETY AND RELIABILITY IN MINING OPERATIONS

The mining industry relies on technology solutions for optimal operation. At the same time, miners must follow strict laws and implement dedicated strategies to boost worker safety.

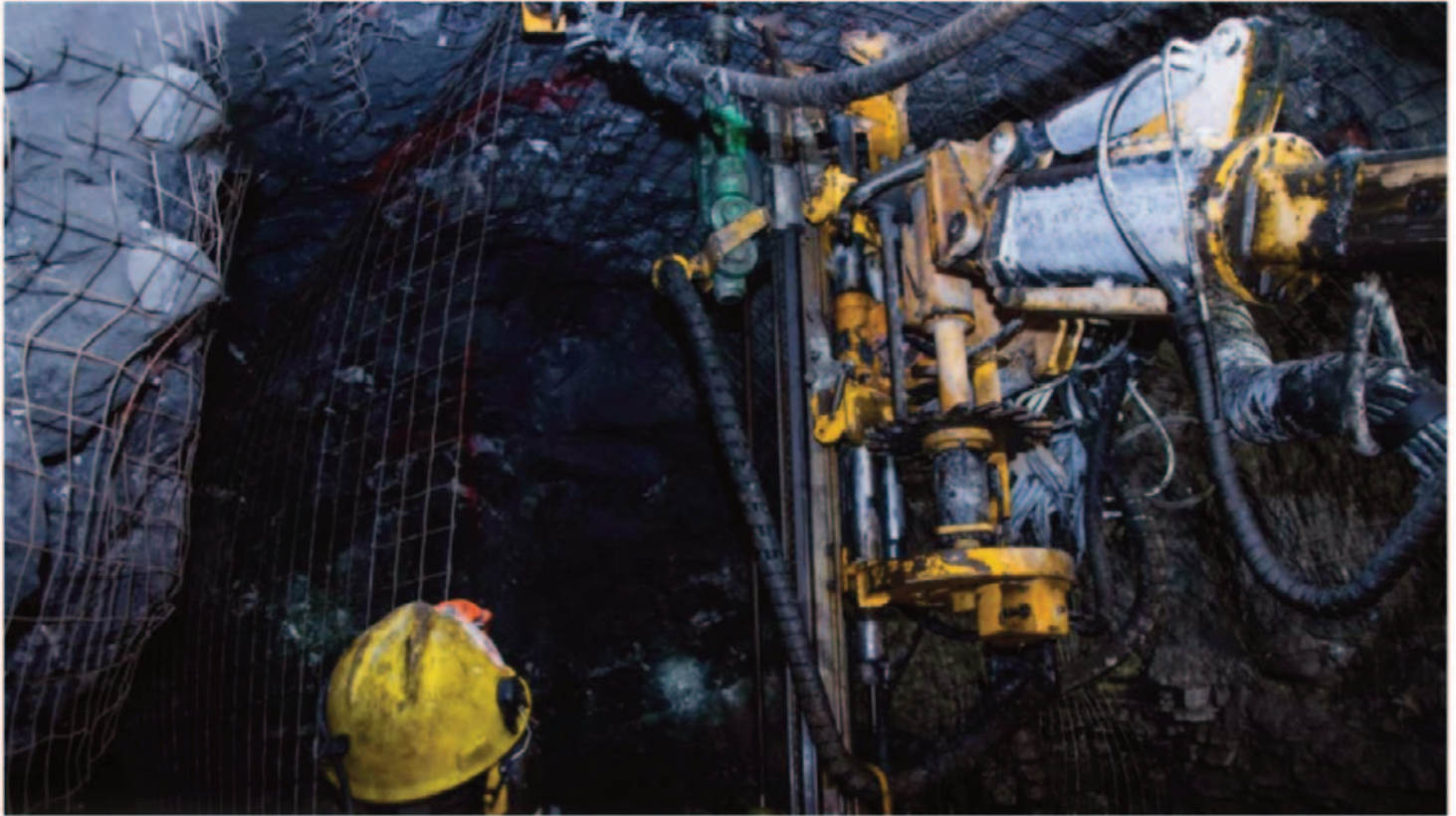
Addressing these needs with its turnkey safety and productivity solutions is Matrix Design Group. Matrix is dedicated to offering best-in-class, mining sector-regulated, and operations-friendly applications that allow mines to enhance worker safety and mitigate supply chain-related challenges.

“We’re a subsidiary of Alliance Coal, the U.S. industry leader in safety and productivity. This gives us an enormous advantage in terms of understanding customer needs, testing products in mining environments, and getting real-world feedback for continual product improvement,” says Ben

Lemond, Vice President of Engineering, Matrix Design Group. “This helps us add a layer of safety to customer operations without impairing day-to-day productivity.”

Matrix Design Group delivers safety and productivity solutions for underground and surface mining, as well as industrial operations. Its portfolio comprises data networking, communications and tracking, underground mining proximity detection, industrial collision avoidance systems, and data analytics services. As a leader in the underground coal space, Matrix provides an arsenal of customizable products and services to solve prevalent mining problems, improve overall operations, and maintain regulatory compliance.

Because helping operations access and mine their data to boost safety and productivity is a key focus for Matrix, it has developed products that simplify data accessibility



for operators. The company's new Powerline Module (PLM) facilitates secure communications via built-in Wi-Fi access points seamlessly integrated with mobile cable-powered machines to produce and scale connectivity within mines.

Matrix Design Group assists clients in complying with Mine Safety and Health Administration (MSHA) rules by equipping underground mining machines with proximity sensors through its flagship IntelliZone® proximity detection system. IntelliZone®, which is also SANS 60079-0/1/11/18 and IECEx approved, utilizes state-of-the-art SharpZone™ technology for precise programmable awareness zones that help protect miners from mobile equipment-related injuries. The system slows or stops machine function and movement whenever workers breach the shaped proximity zones projected around mobile mining equipment.



**MATRIX DESIGN
GROUP PLANS TO
CONTINUE DEVELOPING
PRODUCTS, DATA
SOLUTIONS, AND
ANALYTICS SERVICES
THAT PROVIDE
ACTIONABLE
OPERATIONAL INSIGHTS
TO HELP MINING
COMPANIES ESTABLISH
ROBUST, EFFICIENT,
AND SAFE OPERATIONS**

From an operator standpoint in industrial warehousing and surface mining operations, Matrix offers its award-winning OmniPro® collision

avoidance system, a camera safety solution that leverages Visual A.I. to notify operators of individuals and objects on a mobile equipment unit's anticipated travel path. The system does not require wearable devices for workers to be detected in the customized safety zones created by OmniPro®.

Supporting these innovative products is Matrix Design Group's turnkey business model, which encompasses everything from new product development to field service, which is backed by an industry-best team of highly experienced technicians that do mine site installation, training and repairs.

Moving forward, "Matrix Design Group plans to continue developing products, data solutions, and analytics services that provide actionable operational insights to help mining companies establish robust, efficient, and safe operations." **—M.D.G.**