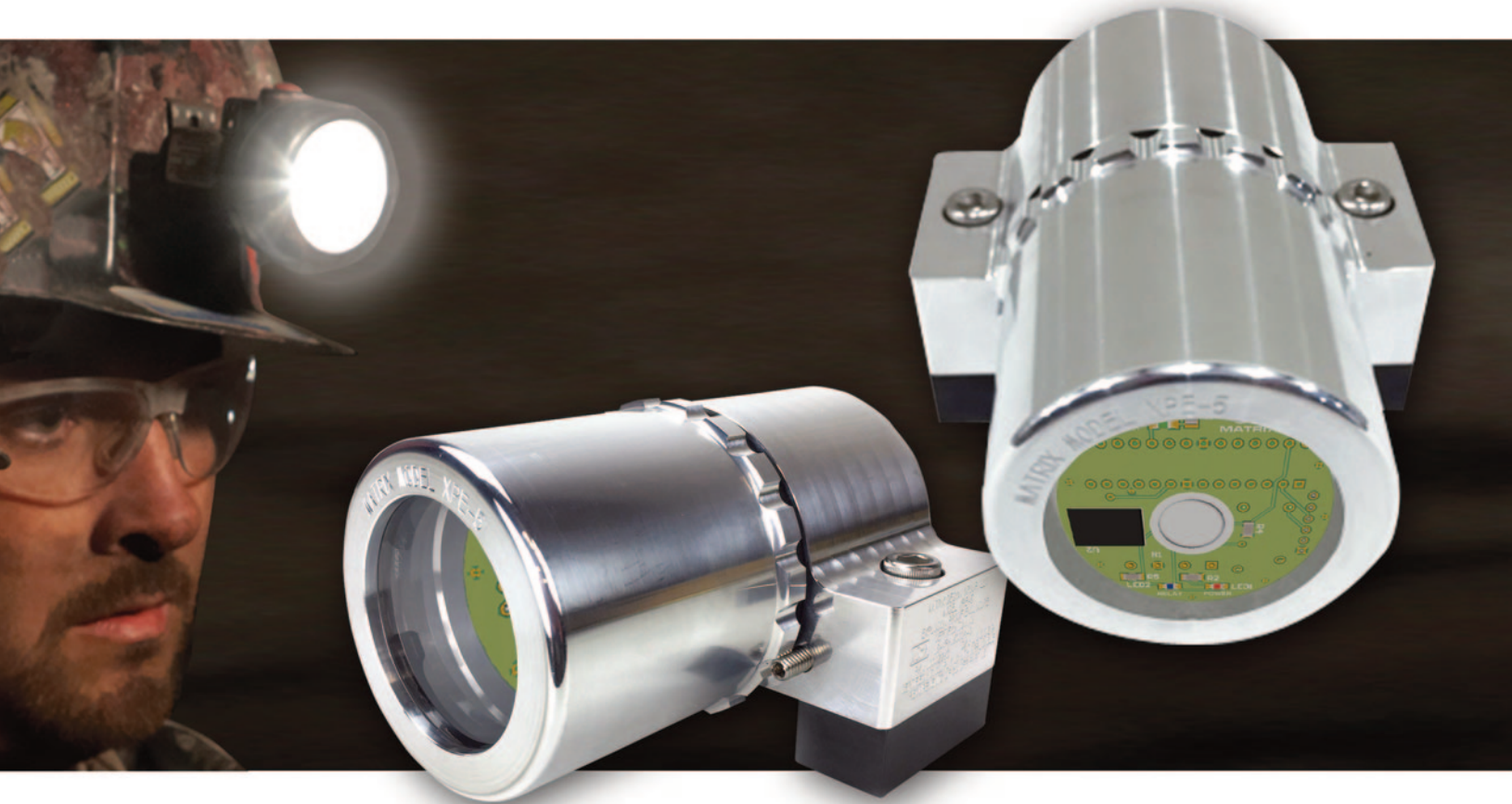




IntelliZone®
PROXIMITY DETECTION

LIGHT SENSOR SWITCH



- **Cap Lamp Beam-Activated Hands-Free Switch**
- **Programmable Lumen Activation**
- **Constant Beam or Flash Activation**
- **Adjustable Timer**
- **Rugged XPE-5 Enclosure**
- **MSHA approved**

The IntelliZone Light Sensor Switch allows a CM operator to use their cap lamp beam to turn on or turn off zones or activate IntelliZone's maintenance mode. It can also be used on haulage vehicles to activate a bypass mode or set a PTO zone on LHDs or Scoops. Hands-free switching allows the operator to continue operating his machine while making needed changes. They simply direct their beam on the Light Sensor Switch to activate or deactivate a function.

The IntelliZone Light Sensor Switch is lumens-programmable, so it can't be accidentally triggered. It can be set so the beam has to stay on the sensor to be kept activated, or to "flash" the sensor and keep it activated for whatever length of time is needed. It also has an adjustable timer so it can be set to deactivate a function, such as maintenance mode, after a predetermined time.

www.matrixteam.com 

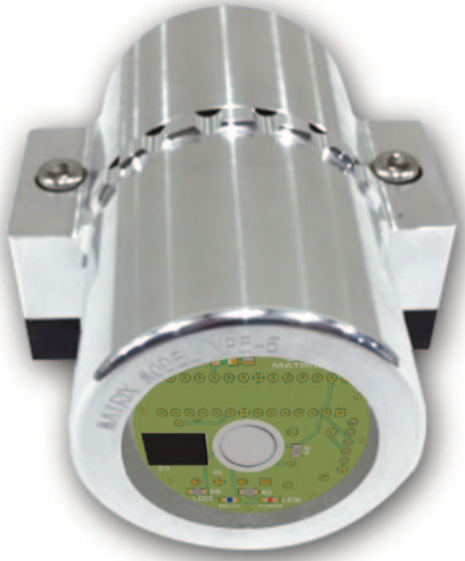


IntelliZone[®]

PROXIMITY DETECTION

LIGHT SENSOR SWITCH

SPECIFICATIONS



Voltage (Input)	8-42VDC \pm 5%
Power (Typical)	6-12W
Relay Contact Rating	10A
Relay Switching Voltage	250VAC, 30VDC - Max
Dimensions (H x W x D)	5.54in x 5.12in x 3.63in 140.6mm x 130.0mm x 92.2mm
Mounting Pattern (W)	4.06in [103mm]
Weight (Approx.)	7.05lbs [3.20kg]

NOTICE

Matrix IntelliZone is intended to help teach mine personnel to safely interact with equipment and stay clear of danger zones. It is not intended to replace safe operating practices. IntelliZone is a useful tool to assist in personnel training.

Information and specifications contained in this document are subject to change without notice.

IntelliZone is a registered trademark of Matrix Design Group, LLC.

FOLLOW US!



www.matrixteam.com 

Phone: 812.490.1525 • Fax: 812.490.1582 • 3299 Tower Drive • Newburgh, Indiana 47630 • email: sales@matrixteam.com