



XP Enclosures



- **MSHA Approved**
- **Replaces Any Standard Enclosure**
- **In Stock. Ready to Ship!**

Matrix manufactures high-quality, robust XP enclosures for coal or gassy mine operations.

These enclosures, designed to replace any existing round or square enclosure, are MSHA approved and in stock.

www.matrixteam.com 

Phone: 812.490.1525 • Fax: 812.490.1582 • 3299 Tower Drive • Newburgh, Indiana 47630 • email: sales@matrixteam.com



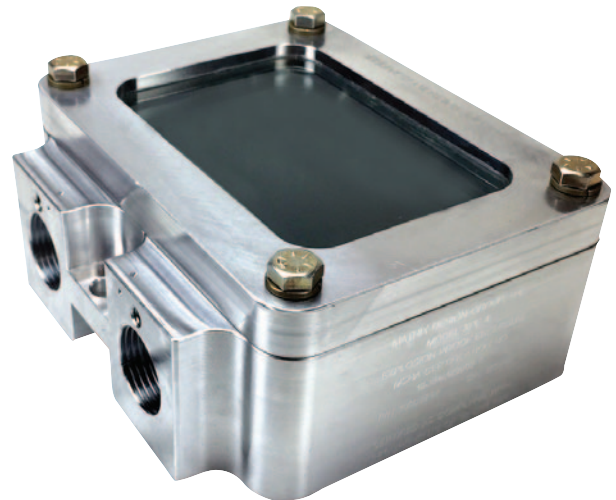
XP Enclosures

CONTACT YOUR MATRIX REP FOR MORE INFORMATION



MODEL XPE-4
**XP SQUARE ENCLOSURE
WITH LID**

MSHA Certified



MODEL XPE-4
**XP SQUARE ENCLOSURE
WITH LENS**

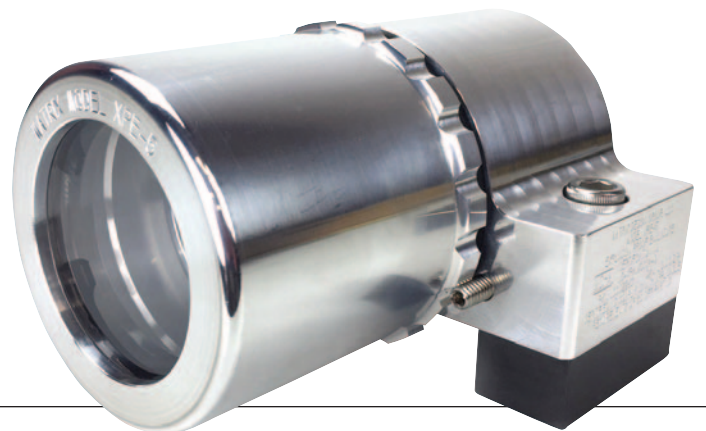
Matrix Part No. 10004268
MSHA Certified

MODEL XPE-5

XP ROUND ENCLOSURE

For lights and cameras. Replaces
any standard round enclosure.

Matrix Part No. 10004009
MSHA Certified



FOLLOW US!



www.matrixteam.com 

Phone: 812.490.1525 • Fax: 812.490.1582 • 3299 Tower Drive • Newburgh, Indiana 47630 • email: sales@matrixteam.com