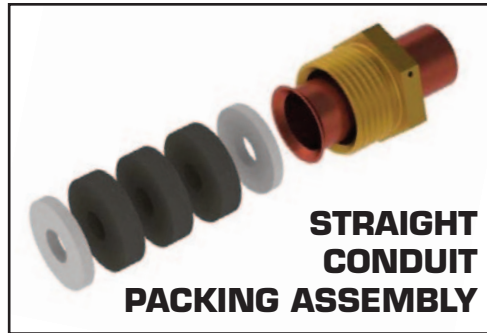
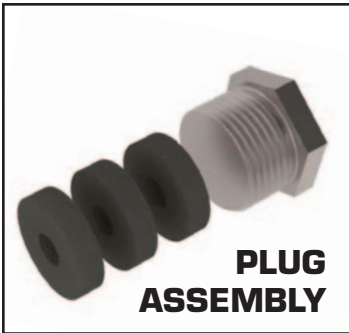




# Packing Glands



Item Number	Item Name/Description
10004115	MPG-3000 Packing Gland 0.39"-0.42" Cable 0.5" Straight Conduit
10004116	MPG-3000 Packing Gland 0.39"-0.42" Cable 0.5" 90-degree Conduit
10004117	MPG-3000 Packing Gland 0.39"-0.42" Cable 0.75" Straight Conduit
10004118	MPG-3000 Packing Gland 0.39"-0.42" Cable 0.75" 90-Degree Conduit
10004119	MPG-3000 Packing Gland 0.27"-0.30" Cable 0.5" Straight Conduit
10004120	MPG-3000 Packing Gland 0.27"-0.30" Cable 0.5" 90-Degee Conduit
10004121	MPG-3000 Packing Gland 0.27"-0.30" Cable 0.75" Straight Conduit
10004122	MPG-3000 Packing Gland 0.27"-0.30" Cable 0.5" 90-Degree Conduit
10004123	MPG-3000 Packing Gland Plug
10004130	MPG-3000 Packing Gland 0.33"-0.36" Cable 0.75" Straight Conduit
10004131	MPG-3000 Packing Gland 0.33"-0.36" Cable 0.5" 90-Degree Conduit
10004132	MPG-3000 Packing Gland 0.63"-0.66" Cable 0.75" Straight Conduit
10004875	MPG-3000 Packing Gland 0.18"-0.21" Cable 0.75" Straight Conduit
10004876	MPG-3000 Packing Gland 0.18"-0.21" Cable 0.75" 90-Degree Conduit
10004879	MPG-3000 Packing Gland 0.33"-0.36" Cable 0.75" 90-Degree Conduit
10004881	MPG-3000 Packing Gland 0.33"-0.36" Cable 0.5" Straight Conduit
10004883	MPG-3000 Packing Gland 0.45"-0.48" Cable 0.75" Straight Conduit
10004885	MPG-3000 Packing Gland 0.45"-0.48" Cable 0.75" 90-Degree Conduit



# XP Enclosures

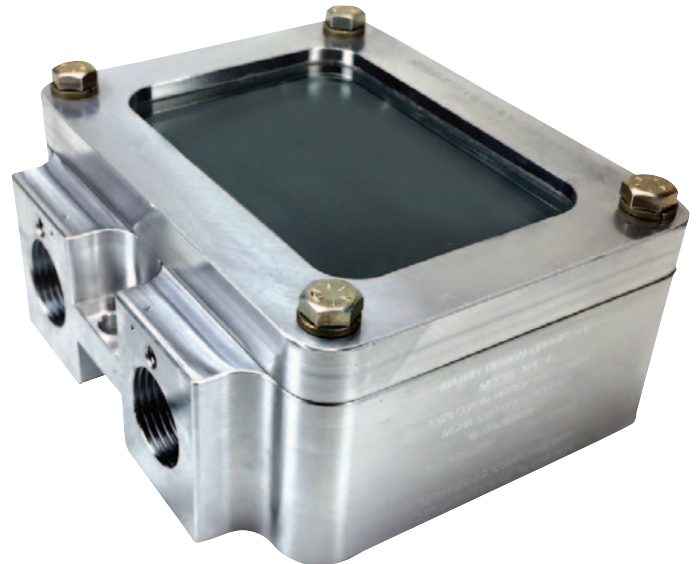


## XPPE-5

XP round enclosure for  
camera or lights.

Matrix Part No.10004009

MSHA Certified



## XPPE-4

XP square enclosure with lens for monitor.  
4.75" x 3.25" x 1.94" internal dimensions.

Matrix Part No.10004268

MSHA Certified

## XPPE-4

XP square enclosure with lid.  
4.75" x 3.25" x 1.94"  
internal dimensions.

MSHA Certified



FOLLOW US!



[www.matrixteam.com](http://www.matrixteam.com) 

Phone: 812.490.1525 • Fax: 812.490.1582 • 3299 Tower Drive • Newburgh, Indiana 47630 • email: sales@matrixteam.com